

Efficient Boilers from:



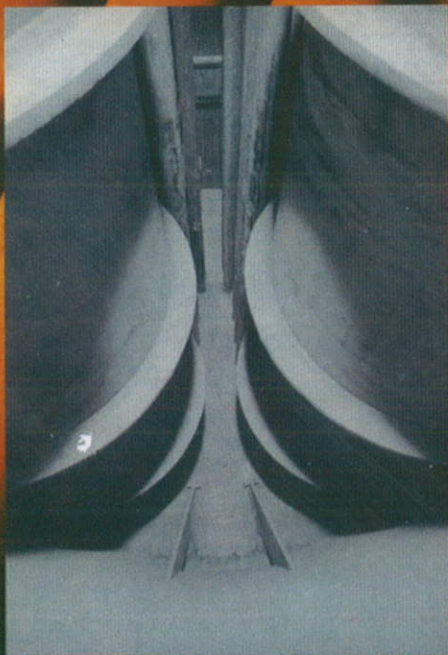
**THERMODYNE  
ENGINEERING SYSTEMS**





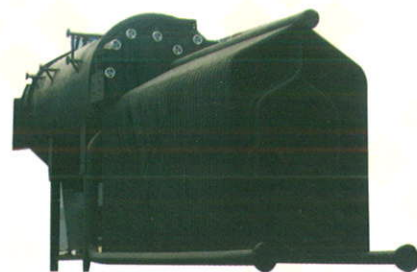
## SALIENT FEATURES

- ❖ **Multi Pass Designs**  
High thermal efficiency
- ❖ **Semi/Fully Wet Back Designs**  
Low maintenance & better heat transfer
- ❖ **Large Water & Steam Holding Capacity**  
High thermal inertia, constant pressure
- ❖ **Packaged Designs**  
Less site work & quick commissioning
- ❖ **Efficient After Sales Service**  
Minimum down time & trouble free operation
- ❖ **Multiple Fuel Options**  
Ease of operations low running costs





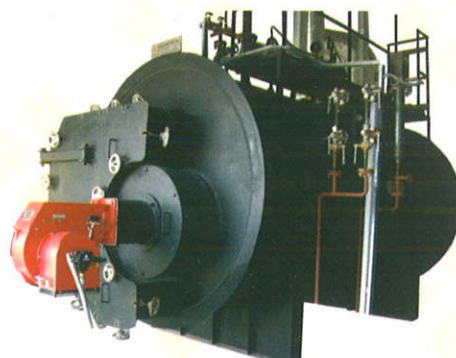
## **COMBITHERM**



### **THE SMOKE CUM WATER TUBE DESIGN BOILER**

This has the combined advantages of water tube and smoke tube designs. The membrane water wall around the furnace ensures maximum radiation heat recovery for agro-waste fuels like rice husk, saw dust, groundnut shells, etc. besides fuels like wood or coal. Large water holding in the smoke tube shell gives excellent response to fluctuating steam loads.

## **SAVEMAX**



### **THE PACKAGED BOILER**

The three pass design packaged boiler is most suitable to burn fuels like heavy / light oils and Gas. The high combustion volume along-with large water and steam holding capacity makes it the most efficient boiler in its class.

## **AGROMAX**



### **THE MULTI-FUEL RUGGED BOILER**

This is a multiple solid fuel firing boiler for variety of fuels like coal, husk, bagasse, wood etc. The rugged construction ensures minimum break-down time and ease of operation.

# THERMODYNE ENGINEERING SYSTEMS

In today's dynamic environment, **THERMODYNE ENGINEERING SYSTEMS** is fast emerging as a leading boiler company. We offer best quality products, backed by sound engineering and prompt after sales service. Ours is a team of engineers specializing in the field of process heat equipments like Steam Boilers, Hot Water Generators and allied equipments. We undertake turnkey jobs for supply & erection of equipments like Chimneys, Oil storage and service tanks, fans & blowers, steam piping including valves and insulation material and many other related items.

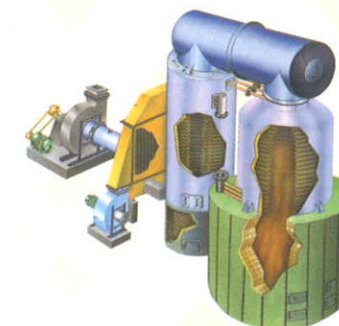
## INTECH



### THE INTERNAL FURNACE BOILER

This three pass design with internal single / double furnace is most suitable for fuels like coal, lignite, wood, briquettes etc. Semi / fully wet back construction ensures maximum heat recovery and high efficiency.

## FLUIDTHERM



### THE SOLID FUEL THERMIC FLUID HEATER

This is a multiple solid fuel fired Thermic fluid heater suitable for fuels like wood, wood waste, coal, bagasse, petcoke, husk etc. The radiant & convective coil design ensures high efficiency and operational advantages.



## Our Product Spectrum



*Call us, because:*

***Energy is precious, Efficiency is not!!***



### **THERMODYNE ENGINEERING SYSTEMS**

A-7/108 & 110, UPSIDC Industrial Area, SSGT Road,  
Ghaziabad-201009, U.P. (INDIA)

Ph.No.: +91-120-2840618, Fax: +91-120-2841785

E-mail : [thermodyneboilers@gmail.com](mailto:thermodyneboilers@gmail.com), [sales@thermodyneboilers.com](mailto:sales@thermodyneboilers.com)

Website : [www.thermodyne.co.in](http://www.thermodyne.co.in), [www.thermodyneboilers.com](http://www.thermodyneboilers.com)

